

7 ARTE

TREPÇ'ART FACTORIES

2021





Mitrovica is one of the oldest habitations in Kosovo. Strategic position and geographical location between two important rivers, the Ibar and the Sitnica as well as economic motives have made the territory of Mitrovica populated since prehistoric times.

From ancient times to the Middle Ages it was known as Albanik (Monte Argentarum), a place rich in silver and lead. The convenient geographical position is of special importance for Mitrovica as an urban center especially for transit traffic. This is because the city is located in the middle of Belgrade in the north and Skopje and Thessaloniki in the south; Nis and Sofia in the east and Podgorica and Tivar in the West.

Important roads of regional and interregional character, crossing through Mitrovica, lead to the interior of the Balkan Peninsula and the Adriatic and Aegean coasts. The railway built in 1874 connects Mitrovica with Skopje and Thessaloniki, two of the most developed centers in the region.

The Trepça mine has been one of the biggest determinants of the development of the city through different periods.



Initial idea and vision

Through this visionary proposal, the NGO 7 Arte presents its conceptual ideas of revitalising the Industrial Park of Trepça in Fafos, Mitrovica.

The idea to undertake such an initiative was born in 2014, when the Executive Director of 7 Arte, Lulzim Hoti had the opportunity to visit the NDSM project in Amsterdam / Netherlands, (a former shipyard, which in recent years has flourished in a major cultural and economic point) seeing it as an accurate and appropriate finding for a post-industrial city, as Mitrovica was becoming.

After this, 7 Arte has formed a group of opinions, from interdisciplinary experts, collecting data and reviewing sustainable practices by organizations and projects of this nature at the international level. The goal was to initially design the concept and the role that the targeted spaces in the Trepça Industrial Park would have in the future. Therefore, seeing the needs of the city of Mitrovica, the lack of space for cultural and development institutions, 7 Arte conceived the idea that Trepç'art Factories would serve as a bridge between institutions, NGOs, businesses and citizens. There art, culture and science would diversify and offer a healthier and more sustainable future for all.

"Enlighten Trepça" - Initial vision for the revitalization of Trepça Industrial Park, Fafos, Mitrovica

Green Fest is the annual festival that 7 Arte organizes, each year the theme of the activities is related to one of the **SDGs (Sustainable Development Goals)**. As part of the 11th Edition, the motto of the festival was "Enlighten the City", the theme set on SDG 11, Sustainable cities and communities. Thus, 7 Arte organized the workshop "Enlighten Trepça", taking an important step towards achieving the goal of "Trepç'Art Factories". The workshop conducted over 5 days addressed the possibility of revitalization and the creation of sustainable spaces in the industrial park "Trepça". The workshop was held exactly there, with participants from different cities of Kosovo, mainly architecture students.



These pictures were realised during the workshop



In the framework of the workshop, active discussions were held between the participants of the workshop and invited officials from the Municipality of Mitrovica, with the city activist Mr. Nexhmedin Spahiu, with Mrs. Nora Prekazi from the Museum of Mitrovica and Mevlude Skuroshi from the Craft Center "Social Space for Deconstruction". To address in more detail the topic of the workshop, were invited lecturers: mentor architect Leunita Sylja, architect Mr. Ron Beqiri from the Faculty of Architecture, University of Prishtina, Mr. Valon Xhabali, from the NGO EC Ma Ndryshe, GE Ramadan S. Uka, and the architects Mr. Blendar Cana, Mr. Kosovar Jashari, Mr. Genc Demiraj, and Mrs. Arbnora Skuroshi. They shared their attitudes and expertise towards the researched space.





The former Trepça Industrial Park is located in Shupkovc, Municipality of Mitrovica. It has an area of 113ha. The area lies at the entrance of the city, near its center, along the Sitnica River. This space is directly connected to the center, about a 9 minutes walk (about 800m distance) through the main road which leads to the city of Prishtina. The area within the site contains buildings with industrial function, of which only a few function today. Roads within the site connect buildings of various destinations, in-between which there are a lot of green spaces.

As presented in the site views attached, the area contains the: Accumulator Factory, Artificial Fertilizer Factory, Zinc Metallurgy Department, Chemical Industry, Facilities of the Former Yugoslav Associates, the Singles' Hotel, and the Miners' Canteen in which the workshop was held. While the surface of industrial waste is distinguished by three areas, phosphorus-gypsum waste, pyrite waste and zinc metallurgy waste.

SWOT ANALYSIS

Strengths:

- Easy and fast connection to the city center
- Proximity to other facilities
- Green spaces
- The structure allows reuse
- Mostly flat terrain
- View
- The large space
- Presence of rivers
- Railway line
- Large number of buildings for reuse
- Calmness
- (Existing) Infrastructure

Weaknesses:

- Environmental pollution
- Obsolescence of buildings and their abandonment
- Abandoned area
- Lack of completed infrastructure
- Railway malfunction

Opportunities:

- Connection to the center and expansion of the city
- Creation of green spaces for recreation
- Interconnection of functions in the area
- Possibility to create special entrances (ex. for the hotel)
- Employment
- Heritage promotion
- Development of a multifunctional complex
- Sustainable and flexible architecture
- Gain visitors from all over the world

Threats:

- Lack of care
- Limitation on the use of planimetry (change of function)
- Restriction on restoration
- Financial costs
- Risk from industrial waste if not worked through

The nature within the site is rich in greenery:



Buildings are in good condition for refunctionalization:



Variety of buildings inside the location:



Total surface: 113 ha

Nature: 80%
91 ha

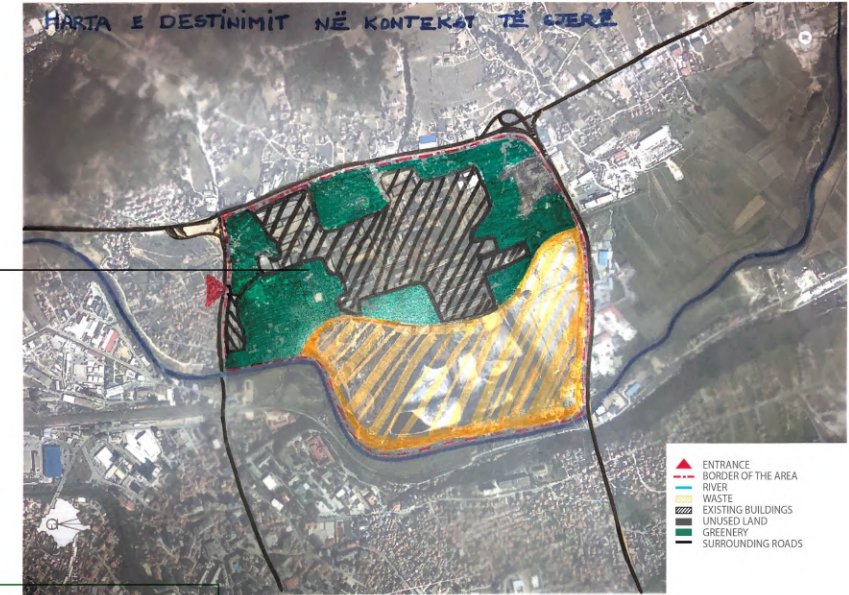
Existing buildings: 5%
5 ha

Unused land: 15%
17 ha

Roads within the location are relatively in good condition:



Destination in the wide context:



Destination in the narrow context:



From the information presented before, the lecturers during the workshop and the analysis of the characteristics of the area as a whole and the facilities in particular, some proposals were made from the staff of 7 Arte and from the participants of the workshop. These proposals are focused on the way of revitalizing the area by re-functionalizing the existing buildings.

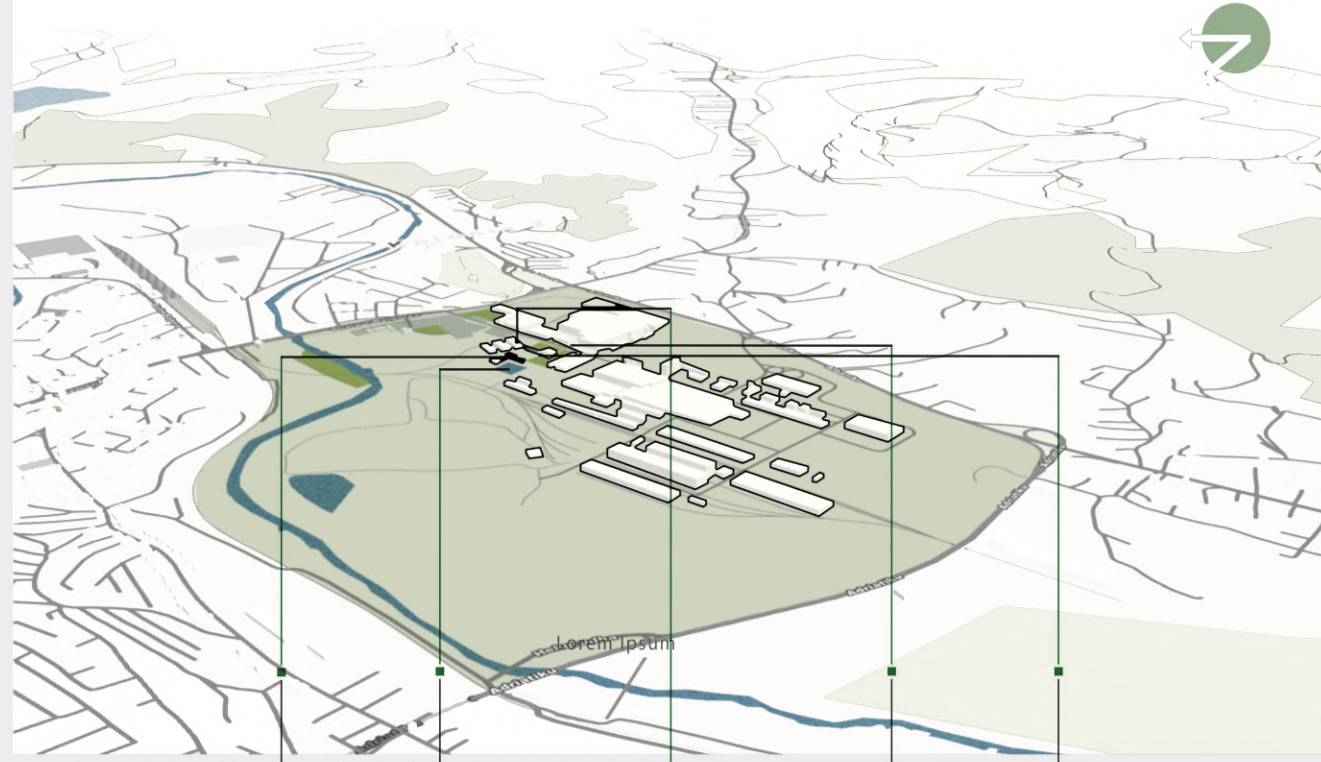
Important measures:

To achieve the regeneration of this space, vast attention should be paid to the application of positive aspects such as:

- Inclusiveness
- Adaptability
- Sustainable architecture
- Protection and promotion of industrial and cultural heritage
- Green architecture
- Biophilic architecture
- Passive design
- Stimulating innovation and creative industry
- Adherence to SDGs
- Use of recyclable and eco-friendly materials

The transformation of the industrial park of Trepça into a cultural space with diverse content would make this area a special tourist spot for the whole region. Through these interventions, it would be possible to improve social life, employment of the population, restore the glory of the city, etc. All this would serve as a positive initiative to realize the same practice in other countries in the region and beyond.

Map of proposed buildings:



The buildings have potential for having new functions such as:





ART EXHIBITIONS

Mitrovica has been known over decades as a place of artists. But with no space where the artists could express themselves, this space could be home to many art pieces, with an industrial and artistic feel in itself.



SKATEBOARDING



This was seen as a potential zone for creating a recreative space, that would enable people to have a quality time while enjoying the nature, and activities like skateboarding, which is not present anywhere in Mitrovica.



SHOPS



The spaces that once were used for parking, can be adapted into shops (coffe shops, book stores, markets etc.) that deliver pieces of genius-loci .



BIOPHILIC ARCHITECTURE



Promoting biophilic architecture, that is sustainable and environmental friendly, is part of the big picture for the whole project. The existing architecture will aim to blend with the nature of the area.



AUDITORIUM



The train that is no longer in function, could be re-turned to tour the visitors around the area, and give them a better perspective on the whole parts.



The abandoned space, can be potentially used as an auditorium for screening films, conferences, public discussions, cultural activities, a place that can adapt different functions depending on the need and request.



RESTAURATION